

## HD-B607-S High-Low Temperature Tensile Test Machine

### EQUIPMENT DETAILS



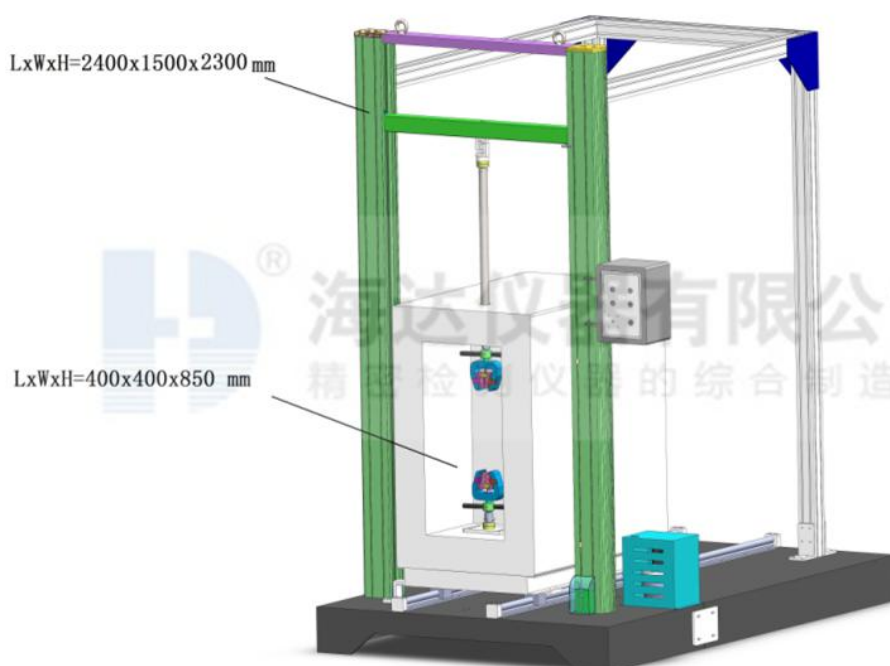
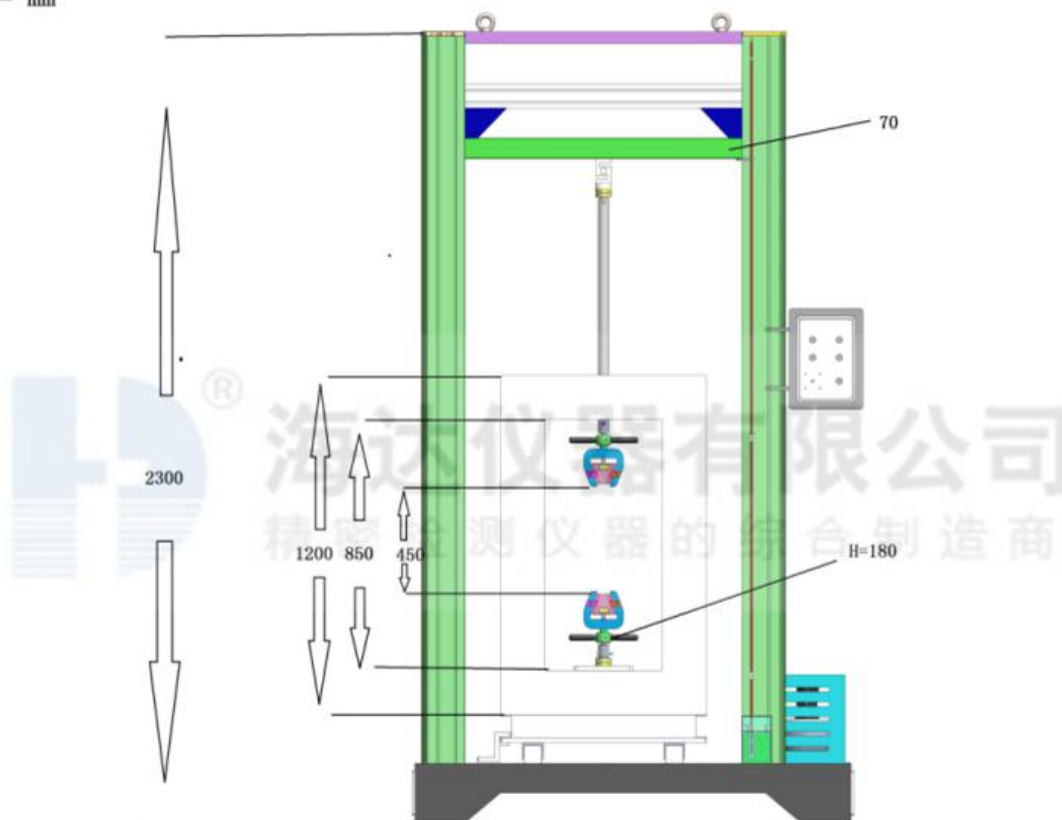
**Tensile clamp**  
**Material:stainless steel**  
**Open mouth:0-10mm**

### APPLICATIONS

This machine is used to meet customer specified test requirements, which it can do tensile, tear test under specified temperature. This machine includes two parts: high & low temperature chamber and tensile tester

## DRAWINGS

unit = mm



## GENERAL SPECIFICATIONS

Power supply source:

Tensile part: single-phase, 230V, 50HZ

Chamber part: three-phase, 415V, 50HZ

## STANDARD FEATURES

<b>Tensile Tester</b>	
Load cell brand	500kg USA/Germany brand load cell for high accuracy
Load accuracy	0.5%
Control system	PC with windows 10 system
Motor	Panasonic servo motor w/AC variable speed drive system, high-precision mechanical ball screw rod
Force reading	kgf, lbf, N, KN, T etc
Test speed	0.1~500mm/min (adjustable)
Curves display	Load- elongation, Elongation-time, Time-elongation, Stress-strain
Data display	Max. force, speed, sample information, strength(Kpa, Mpa, N/mm, N/mm <sup>2</sup> ) etc...
Sample	Rubber, length:100mm
Internal dimension(W*D*H)	400*400*850mm
<b>High &amp; Low Temperature Chamber</b>	
Temperature range	-40~+150 °C
Temperature Accuracy	± 1 °C
Cooling speed	1 °C/min in average (without loading)
Heating speed	3 °C/min in average (without loading)
Internal chamber material	SUS#304 stainless steel, mirror finished
External chamber material	Stainless steel with paint spray
Cooling method	Air cooling
Controller	LCD touch screen, programmable control temperature and humidity can set different parameter for cyclic test
Heater	Explosion-proof type SUS#304 stainless steel fins radiator pipe heater
Compressor	France Tecumseh compressor
Lighting	Heat resistance
Temperature sensor	PT-100 dry and wet bulb sensor
Observation window	Tempered glass

## MAIN PARTS FOR MACHINE



USA or Germany Brand Load cell



Panasonic Servo Motor

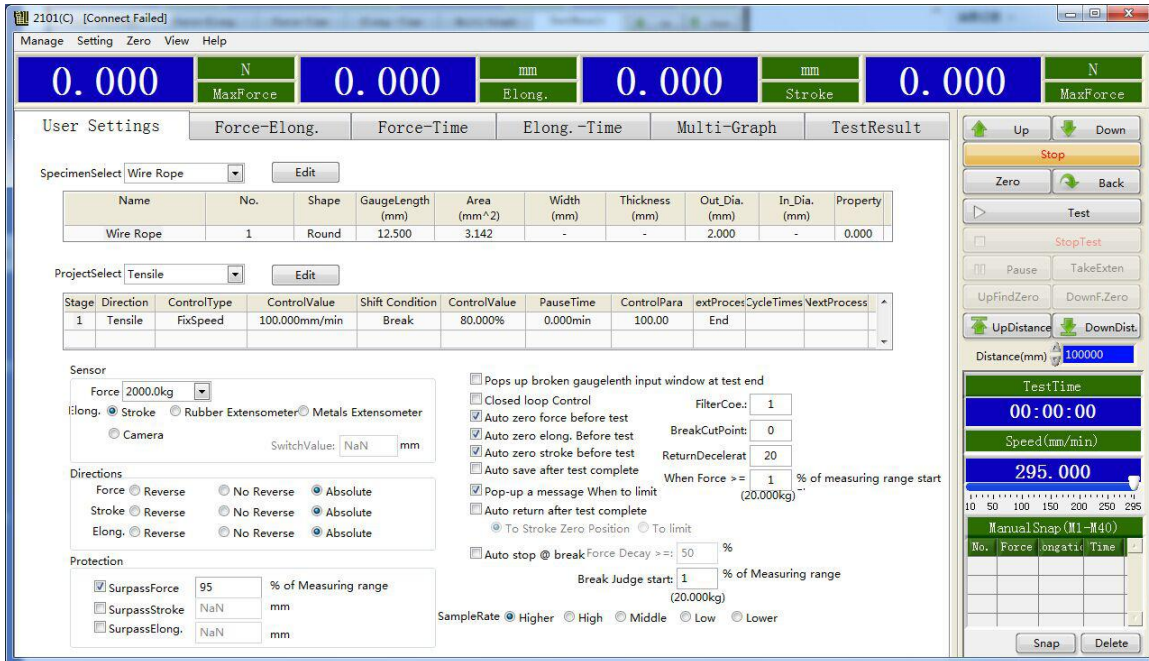


Touch Screen LCD Controller



France Tecumseh Compressor

## SOFTWARE – TM 2101



**User Settings**

SpecimenSelect: Wire Rope

Name	No.	Shape	GaugeLength (mm)	Area (mm <sup>2</sup> )	Width (mm)	Thickness (mm)	Out_Dia. (mm)	In_Dia. (mm)	Property
Wire Rope	1	Round	12.500	3.142	-	-	2.000	-	0.000

ProjectSelect: Tensile

Stage	Direction	ControlType	ControlValue	Shift Condition	ControlValue	PauseTime	ControlPara	extProceCycleTimes	NextProcess
1	Tensile	FixSpeed	100.000mm/min	Break	80.000%	0.000min	100.00	End	


Sensor: Force 2000.0kg, Elong. Stroke, Camera

Directions: Force Absolute, Stroke Absolute, Elong. Absolute

Protection: SurpassForce 95 % of Measuring range, SurpassStroke NaN mm, SurpassElong. NaN mm

Test Time: 00:00:00  
 Speed (mm/min): 295.000  
 Distance (mm): 100000

*User setting page*



**Multi-Graph**

Force(N) vs Elong.(mm) graph: Y-axis from -250 to 250, X-axis from -0.5 to 0.5.

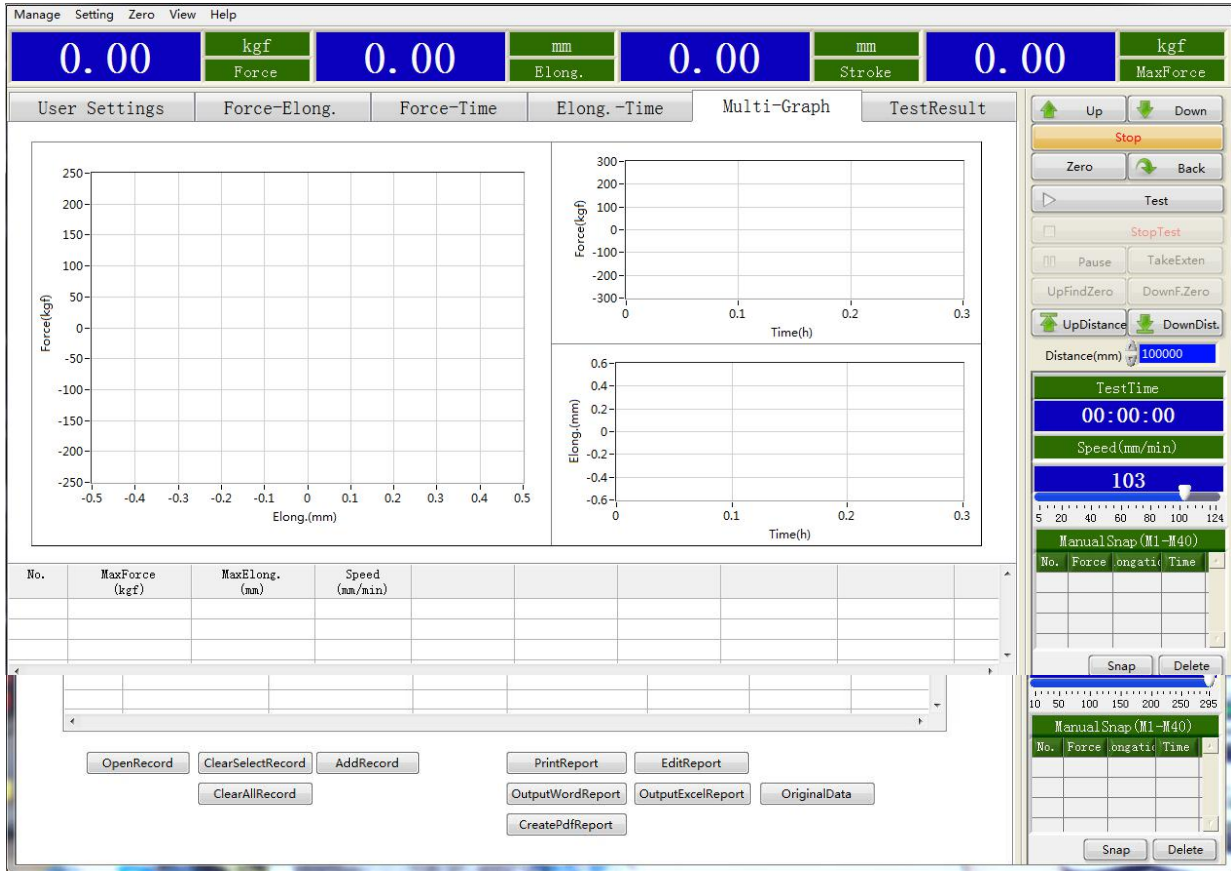
Force(N) vs Time(min) graph: Y-axis from -300 to 300, X-axis from 0 to 0.3.

Elong.(mm) vs Time(min) graph: Y-axis from -0.6 to 0.6, X-axis from 0 to 0.3.

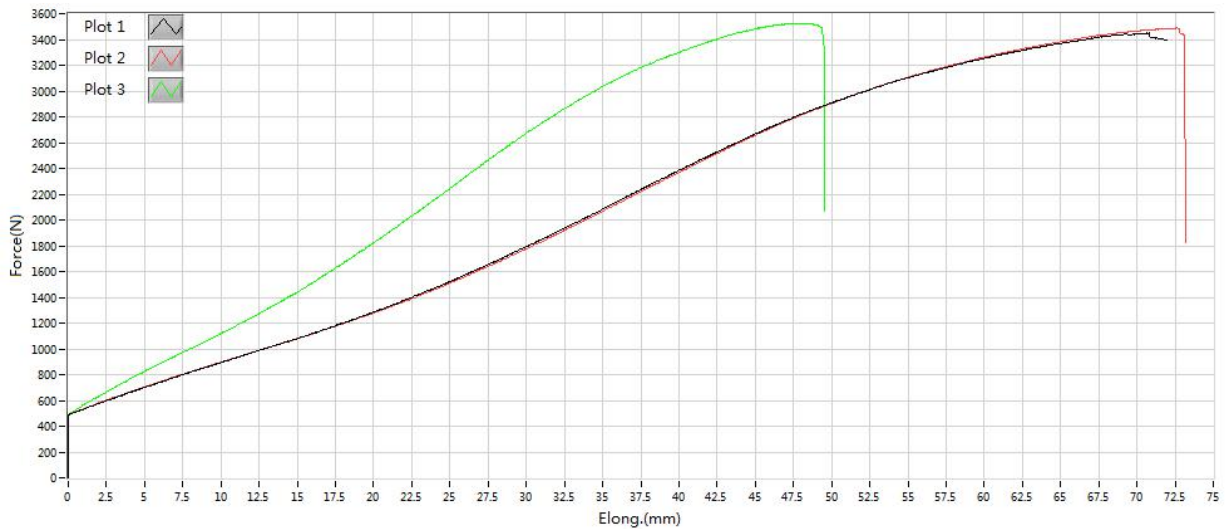
No.	GaugeLength/LoadSpan (mm)	Speed (mm/min)	Force @ Peak (N)	Elong. @ Peak (mm)	Tensile Strength (MPa)

Test Time: 00:00:00  
 Speed (mm/min): 295.000  
 Distance (mm): 100000

Curves display picture



Test result picture



Test curve page

## QUALITY ASSURANCE

### **1. The guarantee period with FOC within 1 year (not including expendable parts cost and transport & travel fees)**

1.1 During the guarantee period, Haida shall supply free maintenance or replacement for the damaged part (just for non-expendable part) caused by non-human reasons;

1.2 If any quality problems occur within the guarantee period, and Haida must provide on-site service, the transport and travel expense shall be borne by buyer;

1.3 If any big quality problems occurs out of the guarantee period, Haida will provide a maintain service, the transport and travel expense shall be borne by buyer, also charge for a favorable price for new parts;

1.4 Haida will provide a lifetime favorable price to the buyer for expendable & non-expendable parts used in system operation, equipment maintenance;

### **2. The following conditions need to be paid reasonably even in the guarantee period:**

2.1 Natural disaster

2.2 Operating mistakes

2.3 Voltage is not fit for our manual

2.4 Uninstall without our guides

2.5 Damaged for borrowing to others

2.6 Damaged for without authorized machine modification

2.7 Damaged for without authorized calibration

2.8 Without authorized transshipment mistake

### **3. Attentions: the machine cannot be used following situations:**

3.1 Vibration, rocking place.

3.2 Direct sunlight.

3.3 Hot, dusty, damp places.

3.4 To ensure safe, AC supply of the machine should be well grounded.

3.5 Do not use strong solvents (such as: benzene, nitro oil) washing machine.

3.6 Do not inject water and debris into the machine to prevent damage to electrical components and electrical shock.

3.7 Machine's disassembly and debugging can only be measured by the State Department approved the units and the company, other people not allowed to overhaul.

## FACTORY DETAILS



**Cutting machine**



**Bending machine**



**In Stock**



**In Stock**



**Show Room**



**Show Room**



## ABOUT HAIDA



## Our Mission: To be your lab consultant

We enable our customers to accelerate their expertise in developing World Class Products. We are providing high quality of testing consultant service on different industry with our equipment.

## PART OF OUR COOPERATED PARTNERS

